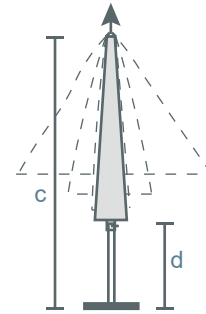
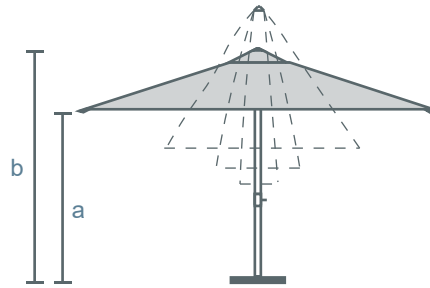
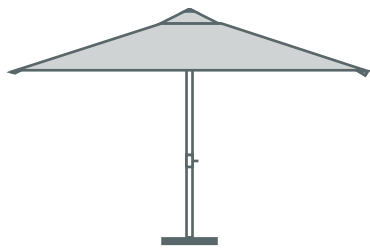




DEHOR CENTERPOST



GENERAL MEASUREMENTS

DETAILED MEASUREMENTS



MODEL			a		b		c		d	
MDH4040	13' 0" x 13' 0"	400 x 400	8' 0"	245	10' 6"	320	13' 11"	425	4' 7"	140
MDH4545	15' 0" x 15' 0"	450 x 450	8' 2"	250	10' 8"	325	14' 3"	435	3' 11"	120
MDH5050	16' 6" x 16' 6"	500 x 500	8' 4"	255	11' 2"	340	15' 3"	465	3' 7"	110
MDH5555	18' 0" x 18' 0"	550 x 550	8' 4"	255	11' 2"	340	15' 7"	475	2' 9"	85
MDH6060	19' 6" x 19' 6"	600 x 600	8' 0"	245	11' 2"	340	15' 11"	485	2' 0"	60



MDH4535	15' 0" x 11' 6"	450 x 350	8' 2"	250	10' 6"	320	13' 11"	425	4' 7"	140
MDH4540	15' 0" x 13' 0"	450 x 400	8' 2"	250	10' 6"	320	14' 1"	430	4' 3"	130
MDH5035	16' 6" x 11' 6"	500 x 350	8' 2"	250	10' 8"	325	14' 1"	430	3' 11"	120
MDH5040	16' 6" x 13' 0"	500 x 400	8' 2"	250	10' 8"	325	14' 1"	430	3' 7"	110
MDH5545	18' 0" x 15' 0"	550 x 450	8' 4"	255	11' 2"	340	15' 1"	460	3' 3"	100
MDH6040	19' 6" x 13' 0"	600 x 400	8' 6"	260	11' 4"	345	14' 7"	445	2' 9"	85
MDH6045	19' 6" x 15' 0"	600 x 450	8' 6"	260	11' 4"	345	15' 13"	465	2' 11"	90
MDH6050	19' 6" x 16' 6"	600 x 500	8' 2"	250	11' 4"	345	15' 11"	485	2' 11"	90



MDHD45	Ø 15' 0"	Ø 450	8' 2"	250	10' 4"	315	13' 3"	405	5' 7"	170
MDHD50	Ø 16' 6"	Ø 500	8' 2"	250	10' 6"	320	13' 5"	410	5' 3"	160
MDHD55	Ø 18' 0"	Ø 550	8' 2"	250	10' 10"	330	13' 9"	420	4' 9"	145
MDHD60	Ø 19' 6"	Ø 600	8' 4"	255	11' 2"	340	14' 9"	450	4' 7"	140

- Please refer to the dimensions in centimeters (cm) as the primary measurements. The dimensions in inches (in) are approximate and provided for convenience only.
- All measurements consider the use of an in ground or bolt down base
- Custom sizes available upon request



DEHOR

SPECIFICATIONS

CATEGORY	Centerpost Umbrella	ALUMINUM FINISH	Ribs and Shaft Powder Coated
SHAFT SIZE	3.35" (85mm) diameter	CANOPY	Yarn Dyed Marine Grade Acrylic 320 gsm
SHAFT ALUMINUM THICKNESS	0.12" (3mm)	UMBRELLA ROTATION	360°
SHAFT MATERIAL	Aluminum	WEIGHT OF STRUCTURE	110-176 lbs (50-80 kg)
NUMBER OF RIBS	8 Ribs	OPENING/CLOSING	Crank
RIB MEASUREMENTS	1.77" x 0.79" (45mm x 20mm) 1.38" x 0.79" (35mm x 20mm)	MECHANISM DETAILS	Endless Screw
RIB ALUMINUM THICKNESS	0.08" (2mm)	TELESCOPIC	Yes
RIB DETAILS	Reinforced Diagonal Ribs	NUTS, BOLTS, SCREWS	Stainless Steel
RIB MATERIAL	Aluminum	VENT	Soft
RIB JOINTS	Aluminum H with Rivets	UMBRELLA COVER	Standard Cover Included

OPTIONS

▶ MOTORIZED MECHANISM

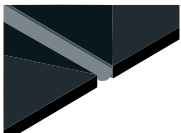


Opening and closing with electric motor.
Operation via dedicated remote control.



ACCESSORIES

▶ GUTTERS



Fabric gutter to connect umbrellas.

Vinyl top for water flow and connected with zipper and velcro.

▶ CURTAINS



Fabric curtains to enclose umbrella area.

Can be made with vinyl windows.

Must be used with support rods.

LIGHTING

▶ LED SPOT LIGHTS



Watt 3
Volt 12

▶ LED STRIP LIGHTS



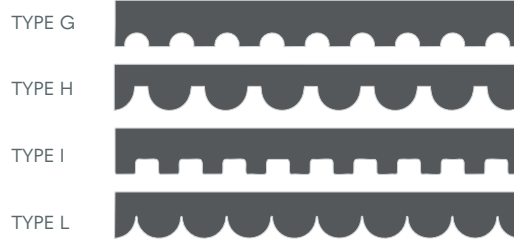
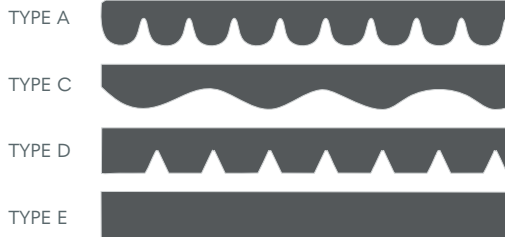
cm.	50	100
in.	20"	40"
Watt	9	18
Volt	12	12



DEHOR

CANOPY

▶ VALANCE



▶ ACCENT BORDERS



▶ FRINGE



▶ CONTRAST BINDING



▶ CONTRAST STITCHING

